

Pearl Reserve



Classic pearls
with a twist for the
modern day woman

FALL 2017



ABOUT

The Pearl Reserve

Founded in February of 2017, The Pearl Reserve is a rapidly growing home based sales company. Our main goal is to help those who want to stay home yet still contribute to their financial freedom. Our Pearl Mavens love being able to work on their own schedule and at their own pace. This gives them the freedom to stay home with their kids, enjoy family time, and just live life without the normal everyday stress.

The Pearl Reserve is all about FUN! Being able to get together with your friends, enjoy a night out, and accessorize with the beauty of pearls. Ninety percent of our jewelry is made to order with the unique one of a kind pearl that you opened through your very own Pearl Maven. This means you will have a custom piece of jewelry made specifically for you.

We're dedicated to the success of each Pearl Maven and know that every one of you has what it takes to make a change in your life. This company is where it is today because of every Pearl Maven that made the leap and joined us on this journey to change the way we accessorize with such a classic gemstone – the Pearl.

ABOUT

Kimberly LeCroy

Mother to three precious boys and wife to an amazing man, I must say I am one of the luckiest women in the world. Being a mother has always been my top priority and I always knew I wanted to be a stay at home mom yet still provide financially for my family.

In 2009, I graduated from college and went on to become a teacher but never truly loved what I was doing. I didn't like being limited in what I could do or what I could make. Having this mindset, I always knew that owning my own business would be the path for me. Home based businesses have always intrigued me and having the ability to help other stay at home moms was exactly what my mission had become.



How It Works



1. FIND A CURRENT PEARL MAVEN.



2. CHOOSE A SETTING FROM OUR GORGEOUS SELECTION OF PRODUCTS.



3. OPEN AN OYSTER (THROUGH YOUR PEARL MAVEN) OR CHOOSE A WHITE PEARL TO BE SET IN YOUR SETTING.



4. YOUR PEARL MAVEN WILL SEND YOUR ONE OF A KIND PEARL TO OUR PEARL SPECIALISTS TO BE MOUNTED INTO YOUR SETTING.



5. EXPECT YOUR CUSTOM PIECE TO BE DELIVERED TO YOUR FRONT DOOR WITHIN 3-5 WEEKS FROM ORDER DATE.



6. ENJOY AND SHARE YOUR LOVE FOR YOUR NEW JEWELRY!

Triple Wrap Bracelets



A



B



C

COMES WITH ONE WHITE PEARL OR OYSTER OPENING



D



E

SILVER PLATED

- 1 A. Black Iridescent Pearl Triple Wrap Bracelet - B421 - **\$45**
Silver plated black undertone with iridescent overtone triple wrap bracelet.
- 1 B. Slate Gray Pearl Triple Wrap Bracelet - B423 - **\$45**
Silver plated slate gray (almost white) triple wrap bracelet.
- 1 C. Navy & White Pearl Triple Wrap Bracelet - B414 - **\$45**
Silver plated navy & white freshwater potato pearl triple wrap bracelet.
- 1 D. Mermaid Pearl Triple Wrap Bracelet - B444 - **\$45**
Silver plated triple wrap with 6-7mm nugget pearls. These pearls vary in color.
- 1 E. White Pearl Triple Wrap Bracelet - B413 - **\$45**
Silver plated white freshwater potato pearl triple wrap bracelet.
- 1 F. Navy Pearl Triple Wrap Bracelet - B412 - **\$45**
Silver plated navy freshwater potato pearl triple wrap bracelet.



F

Model is wearing Up Tempo Necklace (p. 19)
and White Pearl Triple Wrap Bracelet (p. 4)



Single Wrap Bracelets

COMES WITH ONE WHITE PEARL OR OYSTER OPENING



Wrapped In Pearls

- 1 G. Peach Pearl Single Wrap Bracelet - B424 - **\$35**
Silver plated peach freshwater button pearl single wrap bracelet.
- 1 H. White Pearl Single Wrap Bracelet - B404 - **\$35**
Silver plated white freshwater button pearl single wrap bracelet.
- 1 I. Black Pearl Single Wrap Bracelet - B403 - **\$35**
Silver plated black freshwater button pearl single wrap bracelet.
- 1 J. Pink Pearl Single Wrap Bracelet - B405 - **\$35**
Silver plated pink freshwater button pearl single wrap bracelet.

Jewelry Sets

TWO OYSTER OPENINGS OR
FOUR WHITE PEARLS



- 2 A. Fire N Ice Earrings, Necklace & Ring Set - SET504 - **\$177**
 - 2 B. Reserve Earrings, Necklace & Ring Set - SET501 - **\$177**
 - 2 C. Night & Day Necklace & Bracelet Set - SET502 - **\$87**
 - 2 D. Anchor Necklace & Bracelet Set - SET505 - **\$100**
 - 2 E. Bundled Bead Earrings, Necklace & Ring Set - SET503 - **\$177**
- All pieces can also be purchased separately.**



Jewelry in this photograph is not actual size

Model is wearing Reserve Necklace, Reserve Earrings, and Reserve Ring (p. 6)



Bangles

COMES WITH ONE WHITE PEARL OR OYSTER OPENING

1.5mm expandable fashion bangles. Expand from 64mm to 79mm in diameter. Fashion jewelry contains base metal.

- 1 A. Heart Bangle - B419 - **\$37**
A 10mm flower charm, a 15mm heart charm, & an 8mm magnesite charm.
- 1 B. Celtic Bangle - B420 - **\$37**
A 14mm Celtic charm, a 5mm cultured freshwater pearl charm, & a 2mm x 7mm double cultured freshwater seed pearl charm.
- 1 C. Wing Bangle - B417 - **\$37**
A silver tone 9mm x 15mm angel wing charm, a silver tone 15.5mm cut out heart charm, & a 4mm x 7mm clear quartz charm.
- 1 D. Anchor Bangle - B415 - **\$37**
An 11mm flower charm, a 15mm anchor charm disc, & a 9mm dyed blue cultured freshwater pearl.
- 1 E. Tree Bangle - B418 - **\$37**
A 16mm cut out tree charm, a 10mm disc charm, & a 3mm x 6.5mm green glass charm.

Anklets



Model is wearing Brave Yesterday Anklet (p. 9),
White Pearl Triple Wrap Bracelet (p. 4), and
Fire N Ice Ring (p. 17)



Complete
The Look

ONE-INCH EXTENDER
INCLUDED



F

- 1 F. Blessing In Disguise Anklet
Sterling silver anklet with polished 8mm x 14mm sideways cross. The anklet has a spring ring closure.
- 9 Inch Anklet - ANK1 - **\$43**
- 11 Inch Anklet - ANK4 - **\$45**
- 1 G. Brave Yesterday Anklet
Sterling silver anklet with polished 4mm x 19mm sideways arrow. The anklet has a spring ring closure.
- 9 Inch Anklet - ANK2 - **\$43**
- 11 Inch Anklet - ANK3 - **\$45**

COMES WITH ONE WHITE
PEARL OR OYSTER OPENING



G



Cage Necklaces

HOLDS 4 PEARLS

- A. Lotus Cage Necklace - CAGE16 - \$47
- B. Fox Cage Necklace - CAGE23 - \$47
- C. Rose Cage Necklace - CAGE12 - \$47
- D. Owl Cage Necklace - CAGE19 - \$47
- E. Elephant Cage Necklace - CAGE9 - \$47
- F. Dream Catcher Cage Necklace - CAGE22 - \$47
- G. SP* Owl Cage Necklace - SPCAGE1 - \$32
- H. Diamond Cut Cage Necklace - CAGE26 - \$57
- I. High Rise Cage Necklace - CAGE7 - \$47
- J. Better Half Cage Necklace - CAGE15 - \$47

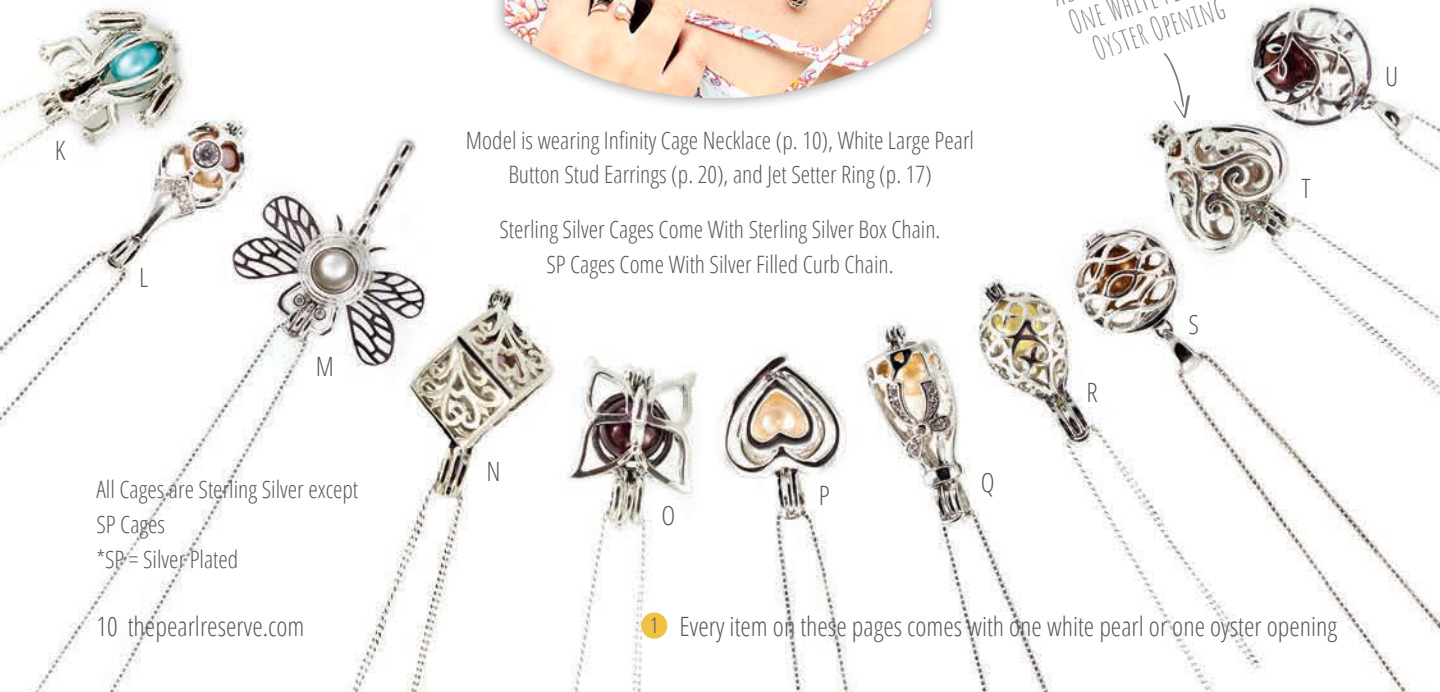


- K. SP* Frog Cage Necklace - SPCAGE3 - \$32
- L. Lady Luck Cage Necklace - CAGE20 - \$47
- M. Dragonfly Cage Necklace - N218 - \$47
- N. SP* Box Cage Necklace - SPCAGE2 - \$32
- O. SP* Butterfly Cage Necklace - SPCAGE6 - \$32
- P. Double Heart Cage Necklace - CAGE2 - \$47
- Q. Wish Cage Necklace - CAGE21 - \$47
- R. SP* Drop Cage Necklace - SPCAGE5 - \$32
- S. Infinity Cage Necklace - CAGE24 - \$57
- T. SP* Heart Cage Necklace - SPCAGE4 - \$32
- U. Family Tree Cage Necklace - CAGE25 - \$57

Model is wearing Infinity Cage Necklace (p. 10), White Large Pearl Button Stud Earrings (p. 20), and Jet Setter Ring (p. 17)

Sterling Silver Cages Come With Sterling Silver Box Chain.
SP Cages Come With Silver Filled Curb Chain.

ALL CAGES COME WITH ONE WHITE PEARL OR OYSTER OPENING



All Cages are Sterling Silver except SP Cages
*SP= Silver Plated



Large Cage Necklaces

↑ EACH CAGE COMES WITH ONE WHITE PEARL OR OYSTER OPENING

↑ GOLD PLATED

↑ SILVER PLATED

SILVER, GOLD, OR ROSE GOLD PLATED BRASS CAGES

↑ ROSE GOLD PLATED

↑ ROSE GOLD PLATED

↑ 31" PLATED ROLO CHAIN

↑ GOLD & SILVER PLATED

- A. Graceful Fan Cage - CAGE31 - \$32
- B. Royal Robin Cage - CAGE29 - \$32
- C. Adored Brass Cage - CAGE27 - \$32
- D. The Golden Hour Cage - CAGE39 - \$32
- E. Love All Around Cage - CAGE33 - \$32
- F. Sweet Trinket Cage - CAGE37 - \$32
- G. Rose Gold Tassel Cage - CAGE34 - \$32

- H. 2-Tone Graceful Fan Cage - CAGE30 - \$32
- I. Devoted Soul Cage - CAGE28 - \$32
- J. Rose Gold Sweet Trinket Cage - CAGE38 - \$32
- K. Antique Love All Around Cage - CAGE32 - \$32
- L. Angelic Bliss Cage - CAGE36 - \$32
- M. Gold Tassel Cage - CAGE35 - \$32



Bracelets

COMES WITH ONE WHITE PEARL OR OYSTER OPENING



ADJUSTABLE TO 9.25 INCHES



1.5 INCH EXTENSION

1 A. Anchor Bracelet - B442 - **\$54**

Sterling silver 6.5 inch bracelet with a 21mm x 12.6mm x 2.6mm anchor pendant.

1 B. Raise The Bar Bracelet - B439 - **\$55**

Adjustable sterling silver box chain bracelet with a 2mm x 47mm polished bar and 4mm slidable bead.

1 C. Flawless Beauty Bracelet - B440 - **\$55**

Adjustable sterling silver box chain bracelet with 2mm x 31mm 14 karat rose gold plated sterling silver CZ Bar and 4mm slidable bead.

1 D. Heart Bracelet - B441 - **\$54**

Sterling silver 6.5 inch bracelet with a 15mm x 22mm heart pendant.

1 E. Everlasting Bangle - B443 - **\$59**

Sterling silver 2.8mm rhodium plated bangle.

1 F. Simply Sleek Bracelet - B438 - **\$55**

Adjustable 14 karat rose gold plated sterling silver box chain bracelet with a 2mm x 47mm polished bar and 4mm slidable bead.



SLIDE BEAD TO ADJUST SIZE OF BRACELET

Keychains



- ① A. White Tassel Keyring - KEY3 - \$32
- ① B. Flower Chapstick Holder - CHAP1 - \$32
- ① C. Brown/Gold Tassel Keyring - KEY4 - \$32
- ① D. Rose Chapstick Holder - CHAP2 - \$32
- ① E. Black Tassel Keyring - KEY2 - \$32
- ① F. Paisley Chapstick Holder - CHAP3 - \$32
- ① G. Gray Tassel Keyring - KEY1 - \$32



Model is wearing White Pearl Necklace (p. 14)

A. White Pearl Necklace - N215 - **\$107**

20 inch freshwater 8-9mm round potato pearl strand necklace. Double silk thread with 8mm sterling silver ball clasp.

B. Night & Day Set - SET502 - **\$87**

18 inch black & white hand knotted pearl necklace & 7.5 inch bracelet set. Freshwater 7-8mm potato pearls.

C. Audrey Strand Pearl Necklace - N231 - **\$97**

20 inch freshwater 7-8mm pink/peach button cultured pearls. Double knotted with durable silk thread.



A



B

8MM STERLING SILVER BALL CLASP

Classic Pearls



C

STERLING SILVER BOX CLASP



D



E

STRING ON
STRETCH CORD



F

Potato Pearl Stretch Bracelets



G



H

Each bracelet measures 7.5 inches and consists of 8-9mm freshwater potato pearls.

- D. Midnight Potato Pearl Stretch Bracelet - B429 - **\$27**
- E. White Potato Pearl Stretch Bracelet - B425 - **\$27**
- F. Chocolate Potato Pearl Stretch Bracelet - B428 - **\$27**
- G. Pink Potato Pearl Stretch Bracelet - B427 - **\$27**
- H. Peach Potato Pearl Stretch Bracelet - B426 - **\$27**



*Fitting the town
in our stunning
rose gold collection*

Jewelry in this photograph is not actual size

Rings

Model is wearing Silver Hoop Earrings (p. 20)
and Uptown Ring (p. 17)



Ring of Pearl



A



B



C



D



E



G



H



F



I



K



L



M



J



N

TWO SEPARATE RINGS

COMES WITH TWO WHITE PEARLS OR OYSTER OPENINGS

Choose from ring sizes 5 to 11.

Model is wearing Twice As Nice Necklace (p. 19)
and Simply Sweet Rings (p. 17)

- 1 A. Heart & Soul Ring - R115 - \$67
- 1 B. Gentle Gem Ring - R108 - \$77
- 1 C. Fire N Ice Ring - R119 - \$67
- 1 D. Endless Journey Ring - R106 - \$77
- 1 E. Double Halo Ring - R109 - \$77
- 1 F. Simply Sweet Rings - R113 - \$82
- 1 G. Uptown Ring - R117 - \$77
- 1 H. Hi-Lo Ring - R112 - \$67
- 2 I. Jet Setter Ring - R118 - \$77
- 1 J. Radiant Point Ring - R110 - \$77
- 2 K. Face 2 Face Ring - R116 - \$77
- 1 L. Bundled Bead Ring - R111 - \$77
- 1 M. Reserve Ring - R107 - \$77
- 1 N. Love Intertwined Ring - R114 - \$77

● Number of white pearl(s) or oyster opening(s)



- ① A. Anchor Necklace - N232 - \$57
- ① B. Timeless Treasure Necklace - N234 - \$67
- ① C. Together Forever Necklace - N235 - \$67
- ① D. Heart to Heart Necklace - N220 - \$57
- ① E. Fire N Ice Necklace - N226 - \$67
- ① F. Never Ending Love Necklace - N210 - \$67
- ② G. Sparkling Duo Necklace - N223 - \$77
- ① H. Pearl Drop Necklace - N203 - \$47
- ① I. Alluring Drop Necklace - N219 - \$57

↑
GOLD

Model is wearing Leap of Faith Necklace (p. 19)

Jewelry in this photograph is not actual size

All jewelry actual size unless otherwise stated

Necklaces



J

K

L

M

N

O

P

Q

R

S

T

U

V

W

COMES WITH TWO
WHITE PEARLS OR
OYSTER OPENINGS

SLIDABLE

ROSE GOLD

COMES WITH ONE
WHITE PEARL OR
OYSTER OPENING

- ① J. Twisted Blend Necklace - N222 - \$77
- ② K. Double Edition Necklace - N227 - \$77
- ① L. Ageless Love Necklace - N225 - \$77
- ① M. Leap of Faith Necklace - N236 - \$77
- ① N. Whole Hearted Necklace - N217 - \$57
- ② O. Royal Bliss Necklace - N205 - \$77
- ① P. Adult Payton's Belle Necklace - N213 - \$37

- ① Q. Kindred Spirt Necklace - N237 - \$67
- ② R. Up Tempo Necklace - N224 - \$77
- ① S. Reserve Necklace - N212 - \$67
- ① T. Bundled Bead Necklace - N221 - \$57
- ① U. Heavens Eye Necklace - N206 - \$57
- ② V. Twice As Nice Necklace - N229 - \$87
- ① W. Silver Arrow Necklace - N211 - \$47

● Number of white pearl(s) or oyster opening(s)

Earrings must be set
with twins or white pearls

Earrings



A



B



C



D



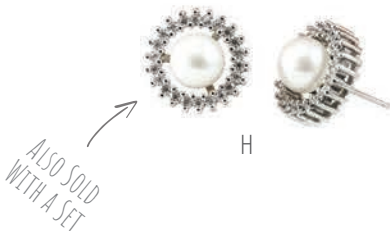
E



F



G



H



I



J



K



L



M



N

- A. Double Circle Earrings - E308 - **\$67**
- B. Pink Button Stud Earrings - E305 - **\$32**
- C. Large White Button Stud Earrings - E313 - **\$42**
- D. Large Peach Button Stud Earrings - E312 - **\$42**
- E. Large Black Button Stud Earrings - E310 - **\$42**
- F. Fire N Ice Earrings - E315 - **\$67**
- G. Black Button Stud Earrings - E306 - **\$32**
- H. Reserve Earrings - E304 - **\$67**
- I. Sparkling Hoop Earrings - E303 - **\$67**
- J. Silver Hoop Earrings - E316 - **\$57**
- K. Bundled Bead Earrings - E314 - **\$67**
- L. White Button Stud Earrings - E307 - **\$32**
- M. Modern Stud Earrings - E302 - **\$67**
- N. Large Pink Button Stud Earrings - E311 - **\$42**

Model is wearing Silver Hoop Earrings (p. 20), Sparkling Duo Necklace (p. 18), Love Intertwined Ring (p. 17), and Everlasting Bangle (p. 12)

jewelry in this photograph is not actual size

"Pearls are always
appropriate"
~ Jackie Kennedy



Charms & Charm Bracelets



EACH CHARM COMES WITH ONE WHITE PEARL OR OYSTER OPENING



E



D



B



C



A

COMES WITH ONE WHITE PEARL OR OYSTER OPENING



F



G



I



H



K



J

ALL CHARMS ARE STERLING SILVER



L



M

- A. Above The Curve Charm Bangle - B437 - **\$59**
Sterling silver 3mm flex bangle bracelet with 6mm sterling silver bead ends. Both silver beads are removable. This bracelet can be used with our charms if they have a split ring.
- B. January Birthstone Charm - CH-01JAN - **\$37**
- C. Faith Cross Charm - CH-13 - **\$37**
- D. Add A Pearl Split Ring Charm - PEARL-SR - **\$25**
- E. February Birthstone Charm - CH-01FEB - **\$37**
- F. Paw Print Charm - CH-20 - **\$37**
- G. March Birthstone Charm - CH-01MAR - **\$37**
- H. April Birthstone Charm - CH-01APR - **\$37**
- I. May Birthstone Charm - CH-01MAY - **\$37**
- J. Angel Wing Charm - CH-02 - **\$37**
- K. Moon & Stars Charm - CH-17 - **\$37**
- L. Live Love Laugh Charm - CH-11 - **\$37**
- M. June Birthstone Charm - CH-01JUN - **\$37**

ALL CHARMS ARE STERLING SILVER



- N. Charm Bracelet
- 7 Inch Bracelet - B402 - **\$57**
- 8 Inch Bracelet - B402-8 - **\$59**
Polished figure 8 charm bracelet. 5.5mm wide charm bracelet features a lobster clasp.
- O. Tree of Life Charm - CH-03 - **\$37**
- P. Add A Pearl Spring Clasp Charm - PEARL-SC - **\$28**
- Q. July Birthstone Charm - CH-01JUL - **\$37**
- R. Ribbon of Hope Charm - CH-04 - **\$37**
- S. August Birthstone Charm - CH-01AUG - **\$37**
- T. September Birthstone Charm - CH-01SEP - **\$37**
- U. Sparkling Heart Charm - CH-28 - **\$37**
- V. October Birthstone Charm - CH-01OCT - **\$37**
- W. November Birthstone Charm - CH-01NOV - **\$37**
- X. Baby Feet Charm - CH-16 - **\$37**
- Y. Anchor Charm - CH-18 - **\$37**
- Z. Key Charm - CH-12 - **\$37**
- AA. December Birthstone Charm - CH-01DEC - **\$37**

COMES WITH ONE WHITE PEARL OR OYSTER OPENING

EACH CHARM COMES WITH ONE WHITE PEARL OR OYSTER OPENING



1 Every item on these pages comes with one white pearl or one oyster opening



*You're never too
young to enjoy the
elegance of pearls*

Model is wearing Children's Butterfly Necklace (p. 25)

Jewelry in this photograph is not actual size



Children's Jewelry



Model is wearing Children's White Pearl Necklace (p. 25) and Children's White Pearl Bracelet (p. 25)



- 1 A. XO, Princess A Children's Necklace - N228 - \$52
- 1 B. Children's Payton's Belle - N214 - \$35
- 1 C. Children's Butterfly Necklace - N233 - \$45
- 1 D. Children's Pixie Flower Cage Necklace - CAGE3 - \$44
- 1 E. Children's Little Darling Necklace - N230 - \$45
- F. Children's Purple Pearl Necklace - N238 - \$42
- G. Children's Purple Pearl Bracelet
 - 5 Inch Bracelet - B435-5 - \$27
 - 6 Inch Bracelet - B435-6 - \$29
- H. Children's White Pearl Bracelet
 - 5 Inch Bracelet - B436-5 - \$27
 - 6 Inch Bracelet - B436-6 - \$29
- I. Children's White Pearl Necklace - N239 - \$42

Items F, G, H, & I are not actual size

Pet Products



Pet collars for your loving pets!

Inside padded leather dog/cat collar. Comes in sizes extra small, small, and medium. Includes one oyster opening or white pearl.

SIZING

Extra Small - SIZE-XS

5/8 inch (1.5cm) width, fits neck size 8-10 inch (20-25cm)

Small - SIZE-S

5/8 inch (1.5cm) width, fits neck size 10-13 inch (25-33cm)

Medium - SIZE-M

7/8 inch (2.0cm) width, fits neck size 12-15 inch (30-38cm)

- 1 A. Pink Pet Collar - PP103 - **\$30**
- 1 B. Blue Pet Collar - PP104 - **\$30**
- 1 C. Brown Pet Collar - PP102 - **\$30**
- 1 D. Black Pet Collar - PP101 - **\$30**

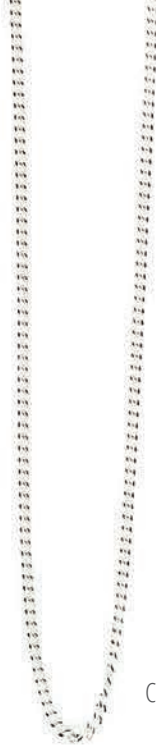
● Number of white pearl(s) or oyster opening(s)



A



B



C



D

Extras



E



F



G

ADD A PEARL TO ANY
PIECE OF JEWELRY



H

KEEP YOUR JEWELRY
SHINY AND CLEAN



I

- A. Sterling Silver Rope Chain
- 18 Inch Chain - C04 - **\$15**
- B. Sterling Silver Box Chain
- 14 Inch Kid's Chain - C09 - **\$13**
- 18 Inch Chain - C03 - **\$15**
- 20 Inch Chain - C01 - **\$17**
- 24 Inch Chain - C02 - **\$19**
- C. Silver Filled Curb Chain
- 18 Inch Chain - C05 - **\$13**
- D. Gold Plated Sterling Silver Box Chain
- 14 Inch Kid's Chain - C06 - **\$13**
- 18 Inch Chain - C07 - **\$15**
- 20 Inch Chain - C08 - **\$17**
- E. 3-Inch Necklace Extender - EX-01 - **\$7**
- 1** F. Add A Pearl Spring Clasp Charm - PEARL-SC - **\$28**
- 1** G. Add A Pearl Split Ring Charm - PEARL-SR - **\$25**
- H. Ring Sizer - PEARL-RINGSIZER - **\$2**
- I. Polishing Cloth - PEARL-POLISH - **\$6**



Wish Jar

Pearl will not be set into a jewelry setting and will be shipped loose. Purchasing this product is giving you the experience and fun of getting to open an oyster with a surprise cultured freshwater pearl inside. No color, size, or value is guaranteed when opening.

Buy a tray of oyster openings,
get a 6th opening free!



- 1 Wish Jar - 1 Oyster Opening - EXP-001 - \$20
- 6 Wish Jar - Tray of 6 Oyster Openings - EXP-006 - \$100



Large freshwater oyster containing 15-20 pearls ranging from 5-10mm. Not available on the website; can only be ordered and opened by your Independent Pearl Maven.

PARTY OYSTER - PARTY - \$75

Party Oyster

15 OR MORE PEARLS
POSSIBLE



Order through your Independent
Pearl Maven today!

Bath Bombs



COMPLETE PIECE OF JEWELRY WITH PEARL



EXAMPLES OF SURPRISE JEWELRY THAT CAN BE FOUND IN YOUR BATH BOMB

1. CHOOSE YOUR JEWELRY

Ring

(Choose size 5-11)

Necklace

Cage Necklace

(Pearl is interchangeable)

Earrings

2. CHOOSE YOUR SCENT

Relax - A classic sweet grapefruit scent known for its relaxing and calming properties. It's the perfect ending to a long day and is great for easing whatever tensions and anxiety the day may have brought you.

Soften - A fantastic sweet citrus essential oil that works wonders on your skin! It's commonly known to reduce cellulite, tighten, and refresh your skin! Plus it is a natural appetite suppressant which helps reduce those cravings.

7.5 ounce bath bomb. Comes with a complete piece of jewelry, including pearl! All jewelry is sterling silver. Jewelry in bath bombs are not sold separately. Color of bath bombs may vary.

7.5 OZ BATH BOMB - \$40

Open at Home Oyster

CHOOSE ANY STERLING SILVER CAGE NECKLACE (FROM PAGE 10)

Includes one individually packaged oyster for opening at home.

OPEN AT HOME - \$47

OPEN IN YOUR OWN HOME





Host a Pearl Party



We have made it easy for you to party.

Invite your friends, then sit back and relax while your Pearl Maven opens oysters live on social media or at an in-home party.

Your friends can pre-order online the day before your party or they can order during the party! All orders must be submitted before the end of your LIVE party. Just make sure you have your guests select YOUR name at checkout to get credit for your party.

Oysters will be opened LIVE at the scheduled time you have set up with your Pearl Maven.

Earn jewelry credit, half price item(s), and/or free oyster openings based on retail sales during your party!

Party Hostess Rewards

Retail Sales	Jewelry Credit	Half Price Item(s)	Free Oyster Opening
\$250.00- \$499.99	10% (\$25.00-\$49.80)	0	0
\$500.00- \$749.99	12% (\$60.00-\$89.88)	0	1
\$750.00- \$999.99	15% (\$112.50-\$149.85)	1	2
\$1000.00+	18% (\$180.00+)	2	3

Contact Your Pearl Maven Today to Book a Party!

Become a Pearl Maven

Join Today for the Career of Your Dreams!

WORK WHENEVER, WHEREVER

Run your business via social media, in-home parties, or even vendor events. You decide your own schedule and hours. You can experience the fun and flexibility as a Pearl Reserve Independent Maven.

If you are looking to just share the experience of opening pearls with your family and friends, or if you would like to build a lasting, full-time income, ask your current Pearl Maven about our compensation plan. YOU determine your commission based on your desired level of activity.

Commission starts at 20% for a Pearl Maven in training. Once you reach \$2000 in LIFETIME personal retail sales you will become an official Pearl Maven.

As a Pearl Maven, you will begin to earn 25% commission on your personal retail sales and your commission doesn't just stop there. As you grow your team you will also see your commission grow!

It is a one-time investment to jump start your career as a Pearl Maven.

Everything you need to start your business for \$175.



Pearl Maven Starter Kit

- 2 Bags of Sand (Black and/or White)
- \$150 in FREE Jewelry Retail Credit**[†]
- 30 Oysters** (two are yours to keep)[†]
 - 30 Resealable Bags & 30 Labels[†]
 - 1 Cutting Board
 - 2 Black Hand Towels
 - 1 Oyster Shucker
 - 1 Pearl Sizing Tool
 - 1 Macro Lens
 - 1 Ring Sizer[†]
 - 5 Catalogs[†]
 - Support & Online Training[†]
- Replicated Website (\$14.95 after 3 Months)[†]
 - Getting Started Folder[†]

* Coupon code for \$150 retail credit will be emailed to you once you have completed sign up.

** Your consignment based oyster count will start at 28.

[†] Not pictured above.

What Our Pearl Mavens Are Saying

LISA ROBERDS

I joined The Pearl Reserve in search of an accelerated path to financial freedom without the stress of taking on another 'regular' job. Not only have I already achieved significant financial gain, but I have also found an amazing sense of family amongst the consultants and customers. Best of all, it's fun! I couldn't ask for a better company to work for.

LOTUS.THEPEARLRESERVE.COM



TARA DANIELLE TIMMONS-SANDUSKY

Hey y'all! I am a mother, wife, teacher, and coach from Texas. I discovered The Pearl Reserve one day while I was surfing Facebook for pearl parties. I began watching my now up-line and fell in love with the shipping time and amazing products. Since making the decision to become a Maven, I was able to pay off our dream family vacation in one month. Most of all, I enjoy the love and support from The Pearl Reserve and my pearl family.

TYPEARLGIrl.THEPEARLRESERVE.COM

TIFFANY BREAUx

I joined The Pearl Reserve because I was looking for work-from-home income to provide more for my family. I took the leap of faith knowing that it would not only make me some extra money, but I would also have fun meeting new people around the world. My decision has been life changing, and a blessing.

CAJUNPEARLGIrl.THEPEARLRESERVE.COM



Become a Pearl Maven Today! SEE INSIDE FOR DETAILS



THE PEARL RESERVE

P.O. Box 1289

Spring Hill, Tennessee 37174

thepearlreserve.com

(931) 451-5440

thepearlreserve@gmail.com

YOUR PEARL MAVEN

Front Cover: Model is wearing Fire N Ice Earrings (p. 20), Double Edition Necklace (p. 19), White Pearl Triple Wrap Bracelet (p. 4), Fire N Ice Ring (p. 17), and Brave Yesterday Anklet (p. 9)

Art direction, catalog layout and design, most model photography, and most product photography by January Creative, januarycreative.com. All other photography and imagery used with permission or license.